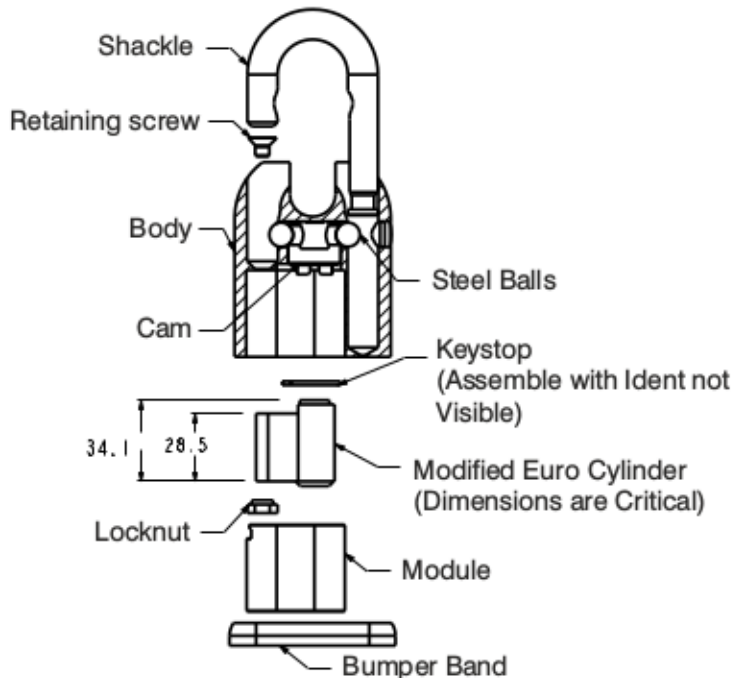




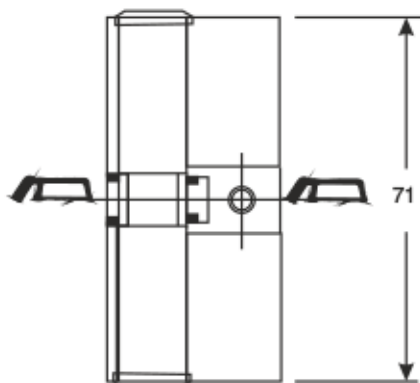
## Fitting Instructions - How to modify a europrofile cylinder to fit the SS65E series padlocks



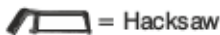
1. Remove module
2. Modify a Euro Cylinder to Dimensions shown and insert into module and then into padlock body.
3. Lock and unlock padlock to ensure correct operation. Insert retaining screw and tighten.

- 1** A Single or double cylinder can be modified. A 71mm equal sided Double is recommended.

*N.B. Remember if you now have two cylinders - more keys may be required.*

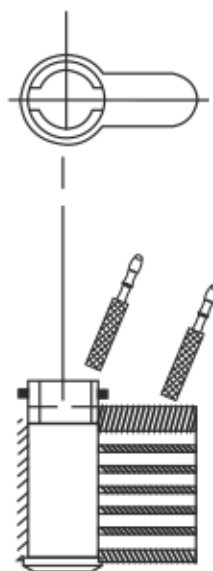


= File

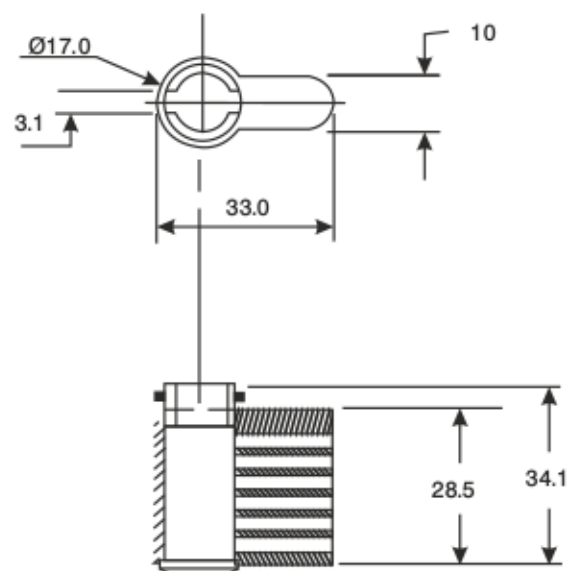


= Hacksaw  
All Dimensions  
in Metric

- 2** Modify it by cutting and filing



- 3** The modified cylinder should have these dimensions which are critical



FRANCE-CADENAS

Téléphone : 01 84 16 48 42 Mail : [contact@france-cadenas.fr](mailto:contact@france-cadenas.fr)

[www.France-cadenas.fr](http://www.France-cadenas.fr)